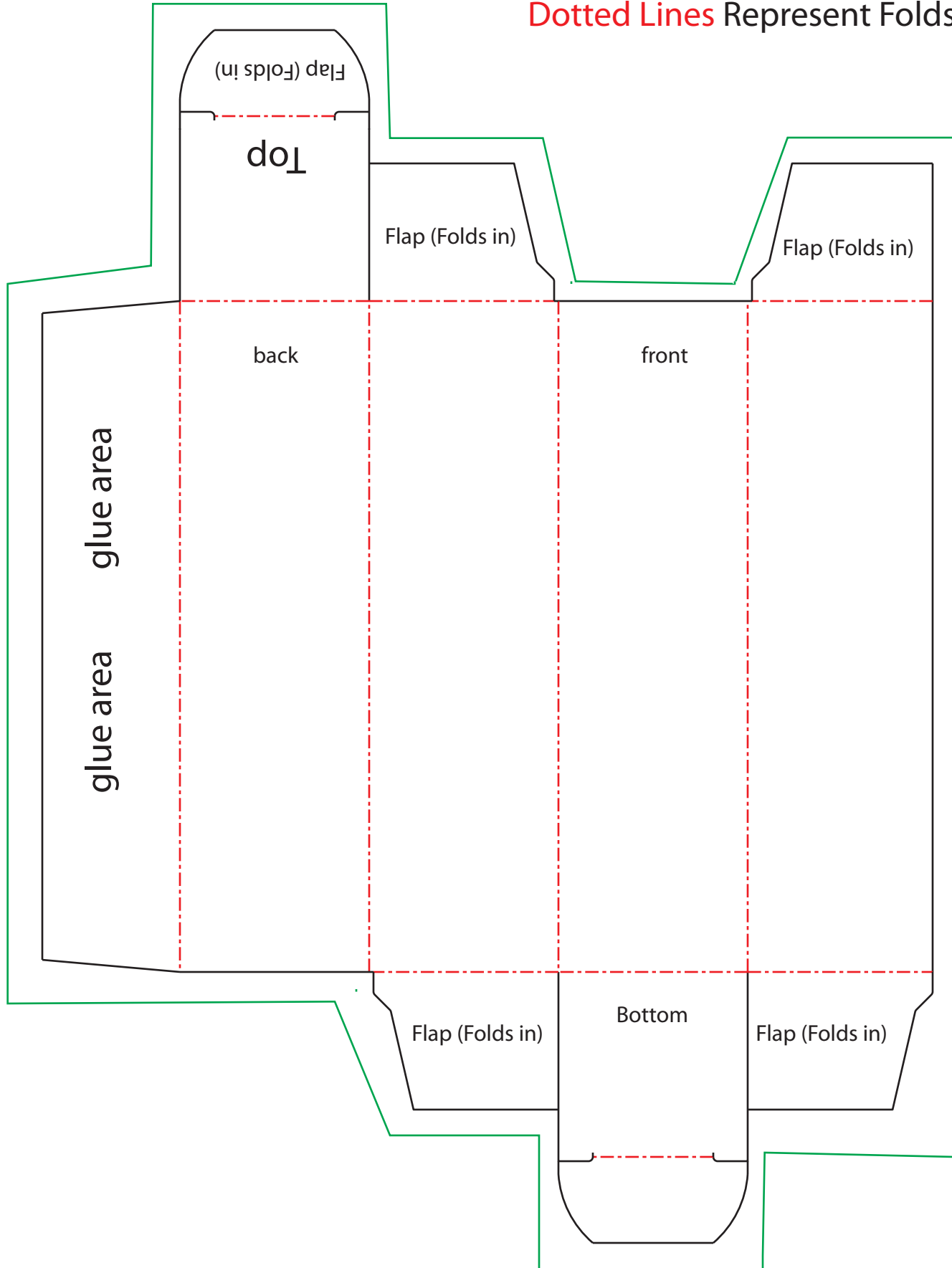


# Bleed Line

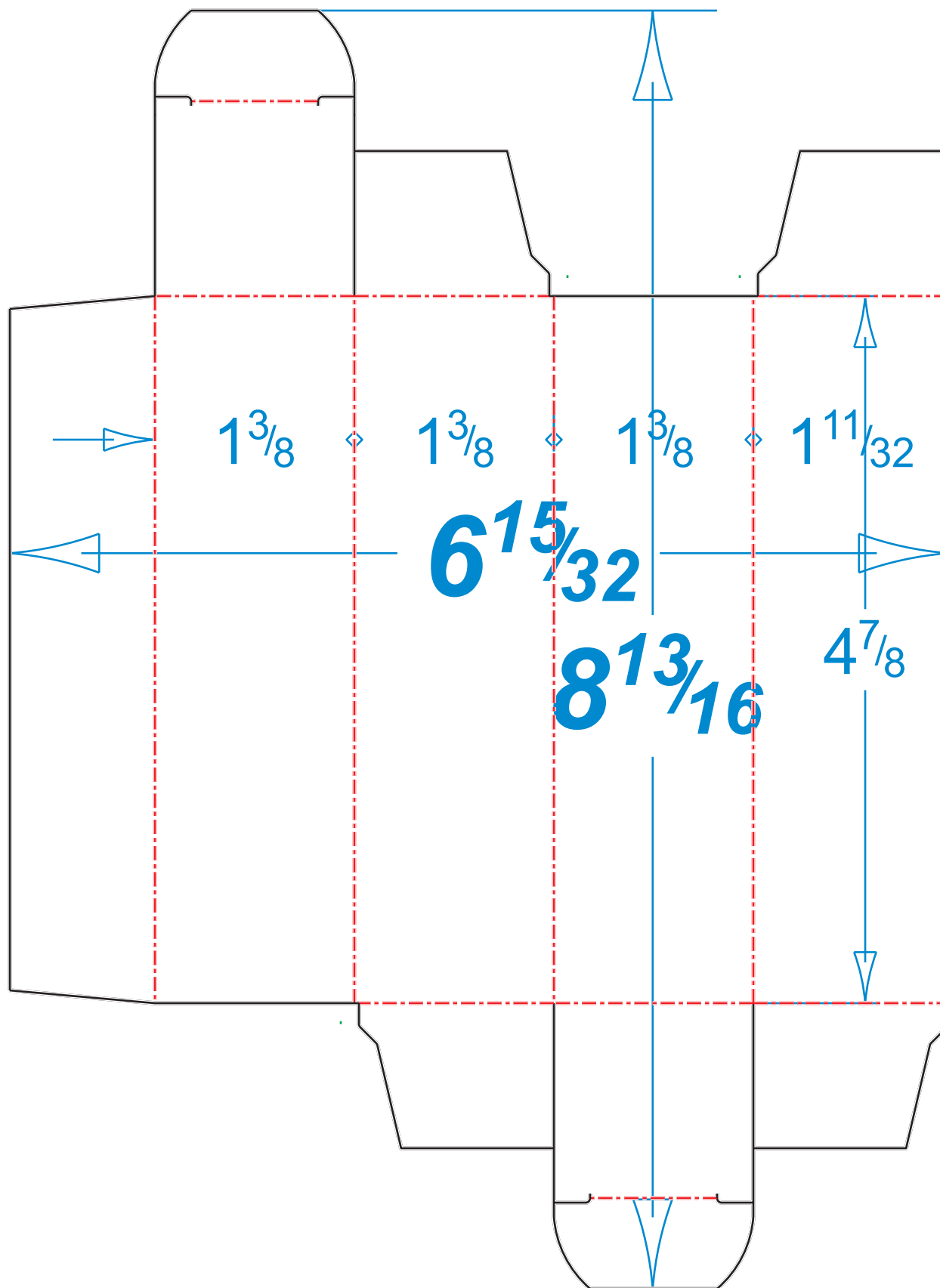
Solid Lines Represent Cut/Trim line - Artwork must extend 1/8th past this line to the green bleed line

Dotted Lines Represent Folds/Crease

Any large Solid Floods of color must contain film grain texture aka noise



WHEN EXPORTING YOUR FINAL HIGH RESOLUTION PDF FOR UPLOAD PLEASE LEAVE THE "YOUR ART WORK" LAYER AS WELL AS "LAYER1" VISIBLE



TEMPLATE FOR PBC-3075