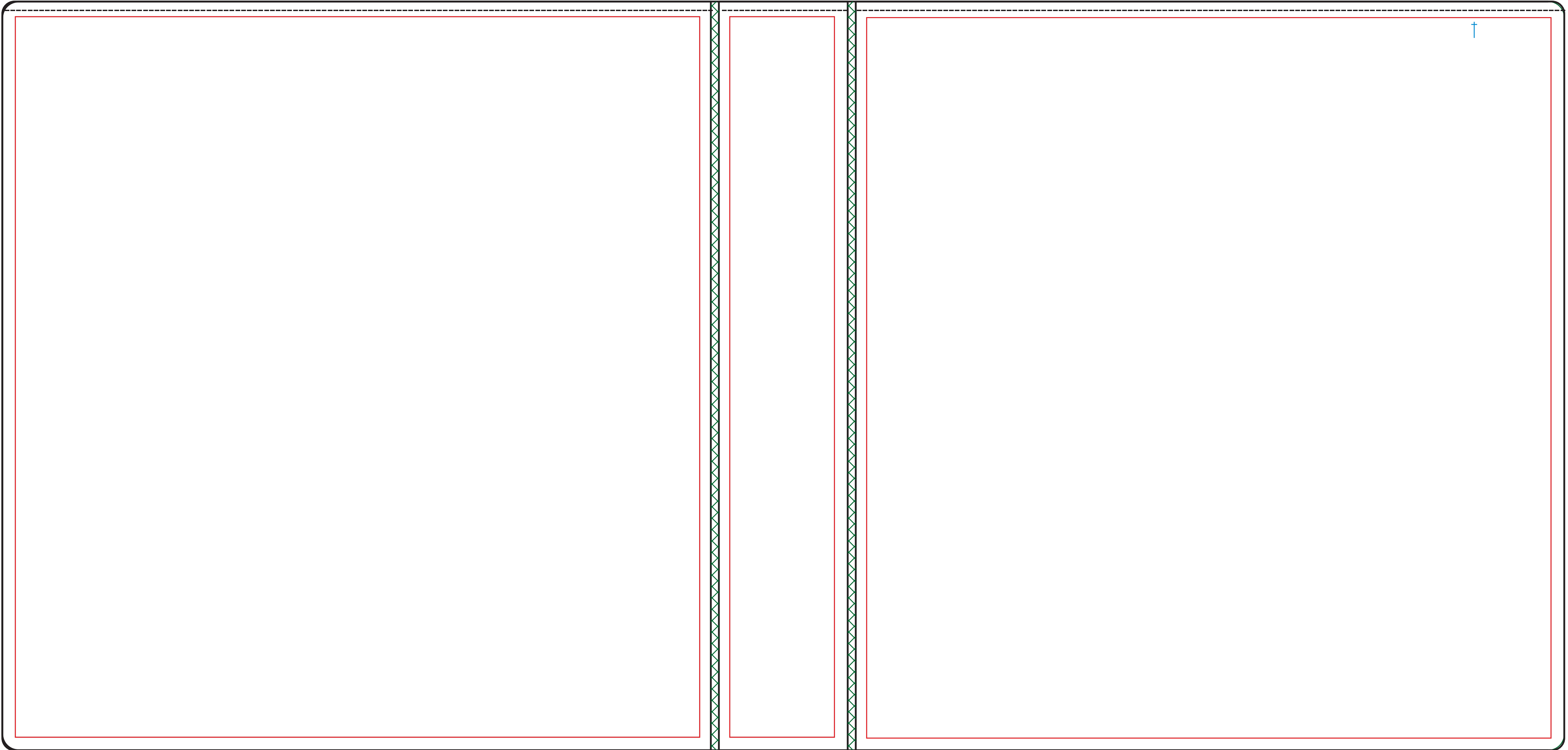


ARTWORK WILL ONLY BE VISIBLE WITHIN THE SPECIFIED RED LINED AREAS, IF YOUR ART FALLS OUTSIDE OF THESE LABELS IT WILL NOT PRINT/PLEASE ACCOUNT FOR 1/8TH BLEED PAST THE RED CUT LINE



WHEN EXPORTING YOUR HIGH QUALITY PRINT READY PDF FOR UPLOAD PLEASE LEAVE YOUR ARTWORK LAYER AND LAYER 1 VISIBLE. TURN ALL OTHER LAYERS OFF

Sealed-In Inserts: front & back panels - 11 7/16" x 10 13/16", spine - 11 7/16" x 1 15/16"  
 Note: Add 1/8" bleed around all sides of inserts for cutting

Back Panel  
11

Spine  
2

Front Panel  
11

11 5/8 binder

1/8

1/8

Hinges

24 1/4 binder

Sealed-In Inserts: front & back panels - 11 7/16" x 10 13/16", spine - 11 7/16" x 1 15/16"  
 Note: Add 1/8" bleed around all sides of inserts for cutting

Back Panel  
11

Spine  
2

Front Panel  
11

11 5/8 binder

1/8

1/8

Hinges

24 1/4 binder