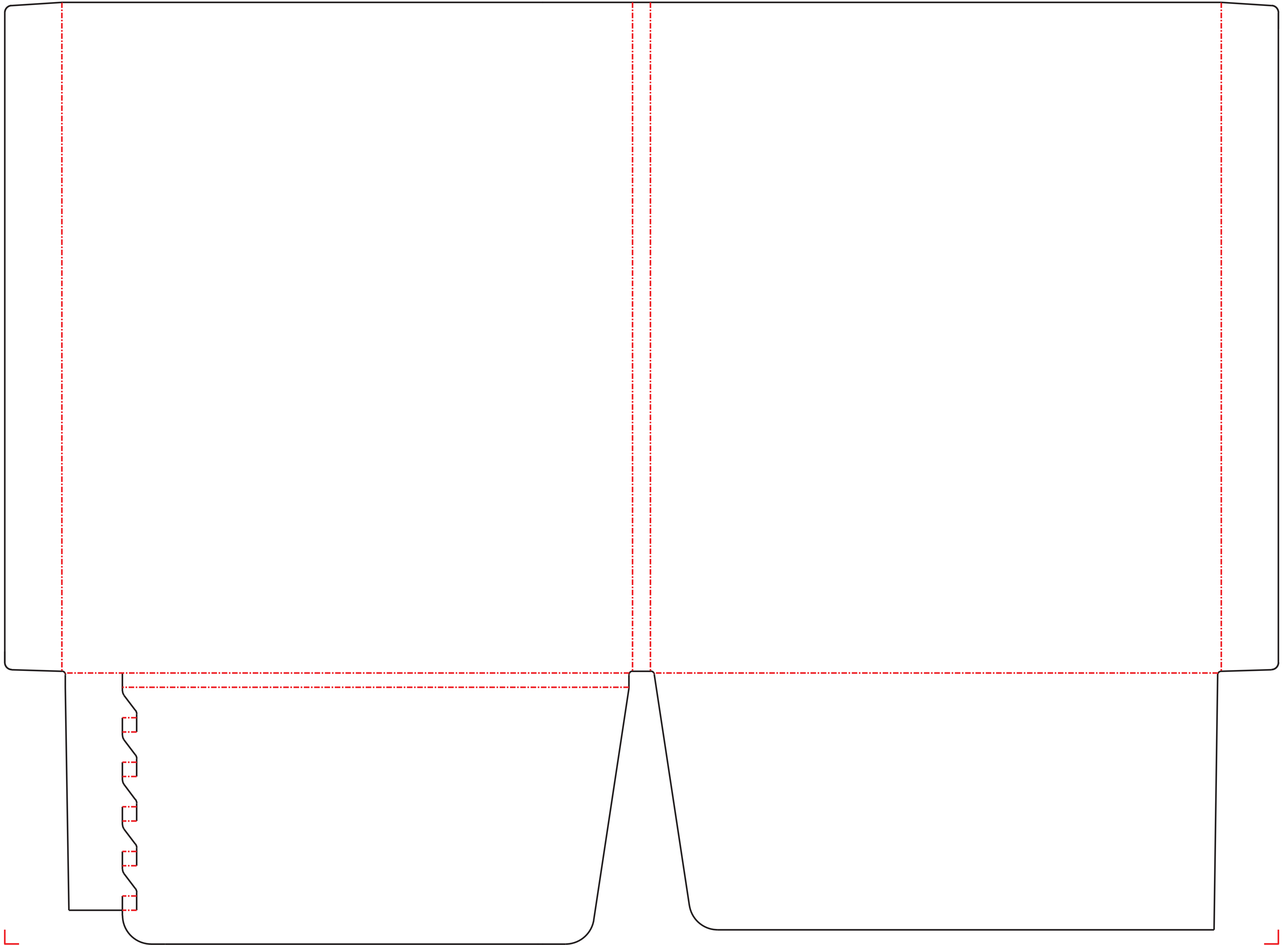


TEMPLATE FOR DIE CXF-1211



TEMPLATE FOR DIE CXF-1211

BACK OUTSIDE COVER

FRONT OUTSIDE COVER

Art on Front & back cover must wrap onto reinforcements 1/32nd, also 1/32nd onto pockets

This area will be covered by reinforcement

If art floods on pockets please make sure that the reinforcement matches accordingly.

If text or images on pocket areas please do not have them fall beyond this guide. It will get covered by the reinforcement!

Bleed Line
Dotted Lines Represent Folds/Crease

WHEN EXPORTING YOUR FINAL HIGH RESOLUTION PDF FOR UPLOAD PLEASE LEAVE THE "YOUR ART WORK" LAYER AS WELL AS "LAYER1" VISIBLE-TURN ALL OTHER LAYERS OFF

Any large Solid Floods of color must contain film grain texture aka noise
Solid BLACK Lines Represent Cut/Trim line
Artwork must extend 1/8th past this line to the green bleed line

Technical drawing of a book cover template. The main body is a rectangle with a width of $22\frac{5}{16}$ and a height of $16\frac{1}{2}$. The spine area on the left has a width of 10 and a height of $11\frac{3}{4}$. The bottom edge features a large triangular cutout with a base of 10 and a height of $4\frac{1}{2}$. The drawing includes various glue tabs and dimensions for assembly, such as $\frac{1}{4}$, $\frac{5}{16}$, and $\frac{1}{2}$. The text "GLUE OVER 2ND SIDE" is repeated on the left and right edges. The drawing is color-coded with blue lines for dimensions and red lines for glue tabs.