

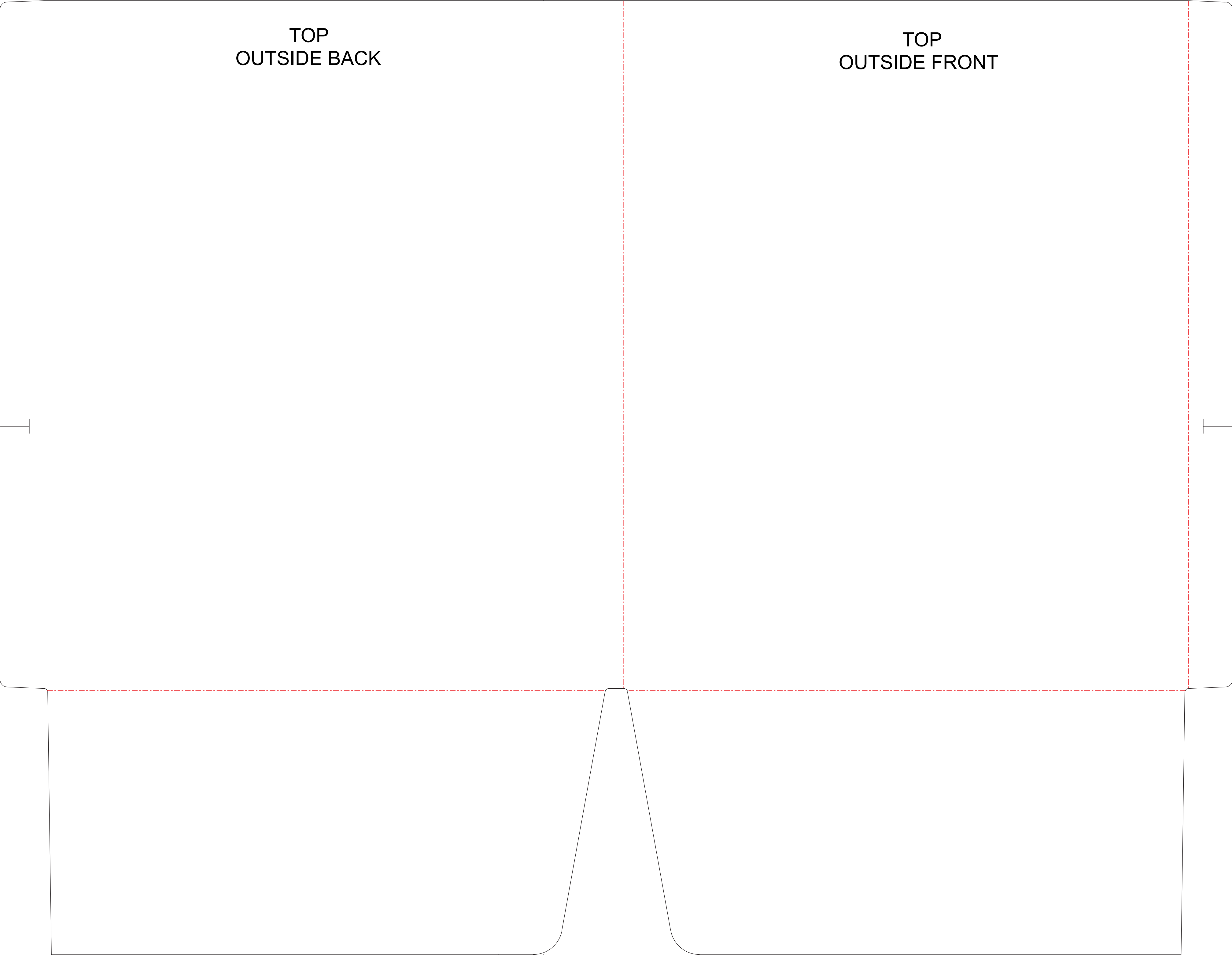
Any large Solid Floods of color must contain film grain texture aka noise

• If your art work is desired to be on all reinforcement areas
please extend out to very last line which is the cut/trim line, and
then extend 1/8th for bleed.

Solid Lines Represent Cut/Trim line - Artwork must extend 1/8th past this line

Dotted Lines Represent Folds

TEMPLATE FOR DIE CXF-1201



WHEN EXPORTING YOUR FINAL HIGH RESOLUTION PDF FOR UPLOAD PLEASE LEAVE “YOUR ART WORK” LAYER AS WELL AS “LAYER1” VISIBLE

TEMPLATE FOR DIE CXF-1201

