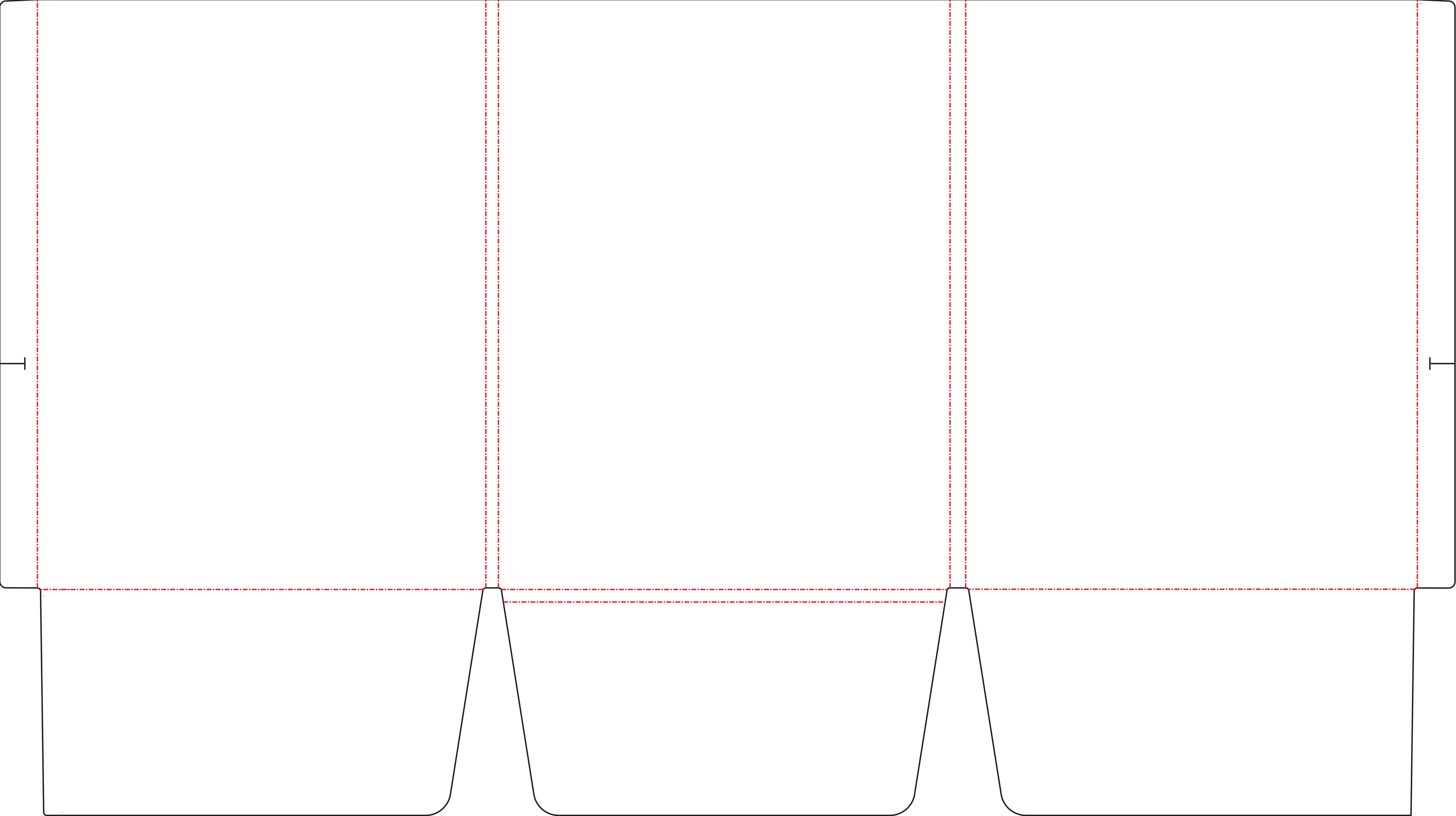


TEMPLATE FOR DIE #SP1500



TEMPLATE FOR DIE #SP1500

Any large Solid Floods of color must contain film grain texture aka noise

WHEN EXPORTING YOUR FINAL HIGH RESOLUTION PDF FOR UPLOAD PLEASE LEAVE THE "YOUR ART WORK" LAYER AS WELL AS "LAYER1" VISIBLE-TURN ALL OTHER LAYERS OFF

Solid BLACK Lines Represent Cut/Trim line
Artwork must extend 1/8th past this line to the green bleed line

Bleed Line
Dotted Lines Represent Folds/Crease

FOLD IN PANEL

BACK OUTSIDE COVER

FRONT OUTSIDE COVER

Art on Front & back cover must wrap onto reinforcements 1/32nd, also 1/32nd onto pockets

if art floods on pockets please make sure that the reinforcement matches accordingly.

If text or images on pocket areas please do not have them fall beyond this guide. It will get covered by the reinforcement!

if art floods on pockets please make sure that the reinforcement matches accordingly.

If text or images on pocket areas please do not have them fall beyond this guide. It will get covered by the reinforcement!

TEMPLATE FOR DIE #SP1500

